

PowerUp Engineering

4.5-meter Car Turntable Specification. Buyer oversees pit design and manufacture.

The design of turntable includes:

- Structure: Fan-shaped structure frame combined
- Foundation: Concrete pit
- Support Wheels: Fixed
- Centre Bearing: Fixed
- Drive Method: Pin-gear drive system
- Rail Plate Device: Pin wheel
- Motor Drive: Gearbox + Pin
- Steel Coating: Rust resistant paint and primer / Hot-dipped galvanized

Control System:

- Function: On/Off, Clockwise/Anti-clockwise, various speed control, emergency stop
- Control Box: Fixed installation
- Power Required: Single phase 200~240VAC, 50Hz/60Hz; Max current: 10A
- Remote Control: Optional (additional cost)



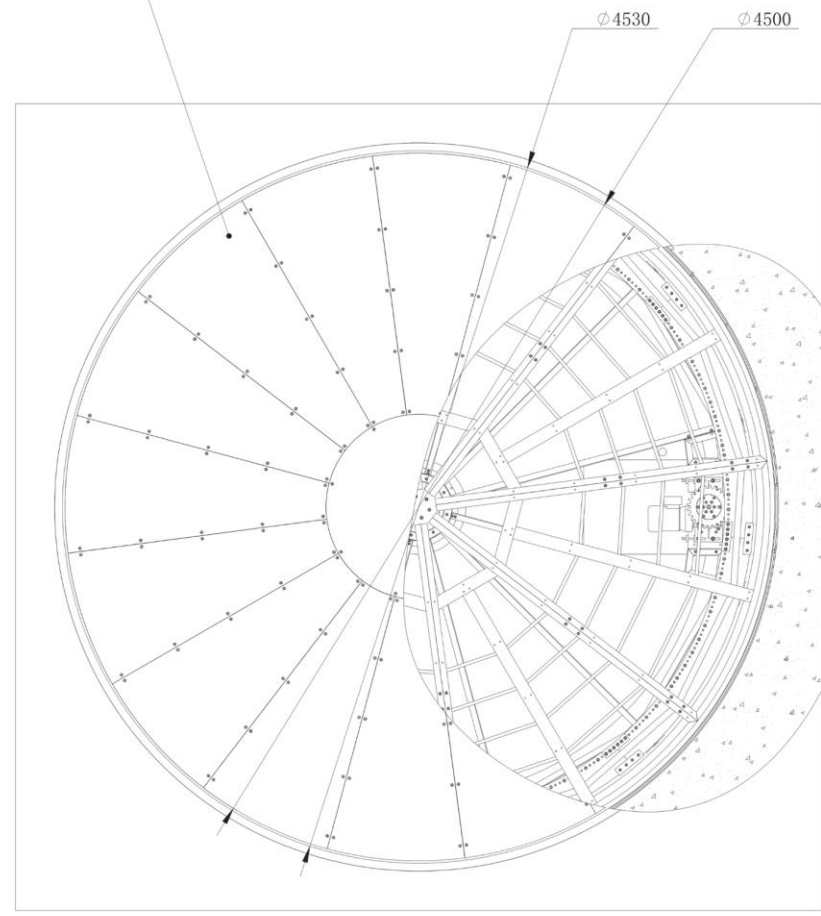
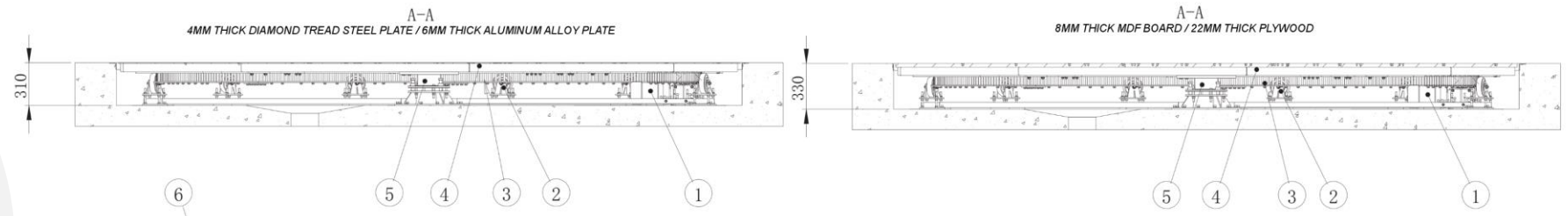
4.5m Car Turntables

	OPTION 1	OPTION 2	OPTION 3	OPTION 4	OPTION 5
TOP SURFACE	4MM THICK DIAMOND TREAD STEEL PLATE	6MM THICK ALUMINUM ALLOY PLATE	18MM THICK MDF BOARD	22MM THICK PLYWOOD	CONCRETE TOP (4mm thick diamond tread steel plate + 75mm height angle steel edge)
DIAMETER	4500 MM	4500 MM	4500 MM	4500 MM	4500 MM
HEIGHT	310 MM	310 MM	330 MM	330 MM	380-510 MM (if motor underneath)
LOAD CAPACITY	4000 KG	4000 KG	4000 KG	4000 KG	7000 KG
MOTOR POWER	0.75kW(1hp)	0.75kW(1hp)	0.75kW(1hp)	0.75kW(1hp)	1.1kW(1.5hp)
INSTALLATION WEIGHT	1592-1633 kg	1352 kg	1279-1311 kg	1279-1311 kg	1800 kg
UNIFORMLY DISTRIBUTED LOAD	2.6-3.2 kPa (260-320 kg/m ²)	2.6-3.2 kPa (260-320 kg/m ²)	2.6-3.2 kPa (260-320 kg/m ²)	2.6-3.2 kPa (260-320 kg/m ²)	4.0 kPa (400 kg/m ²)

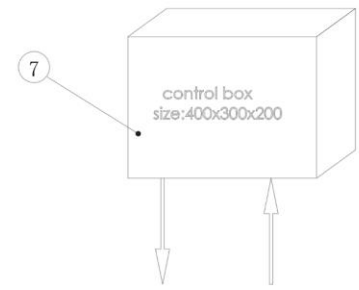


Option 1-4

Motor underneath



No.	Item Name	Quantity
1	Motor drive	1
2	Support wheel	12
3	Pin-gear device	8
4	Steelworks	8
5	Center bearing	1
6	Top surface	17
7	Control box	1



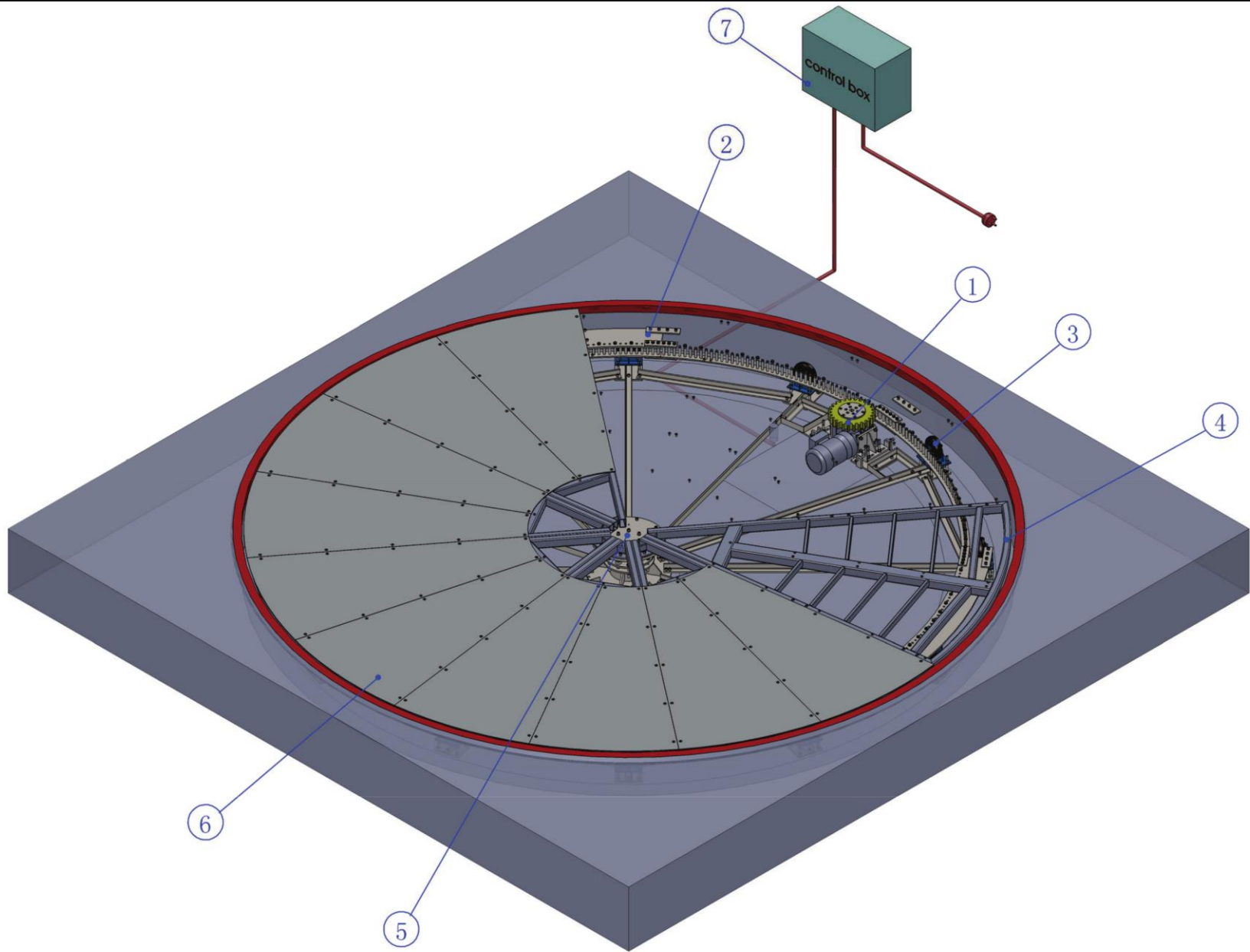
4 - core cable to motor
Power supply cable
specification: H05VV-F 4G1.5

Input power: 200~240V
Power supply cable
specification: H05VV-F 3G1.5

THIS DRAWING IS THE PROPERTY OF
POWERUP ENGINEERING PTY. LTD.
THE INFORMATION CONTAINED
HEREON MAY NOT BE USED OR
COPIED IN ANY MANNER WITHOUT
THE WRITTEN PERMISSION OF THE
OWNER.



JOB					POWERUP ENGINEERING STANDARD DRAWING		TITLE	
DATE				SCALE	S/N	SUBJECT		
DRAWN	DESIGNED	CHECKED	REVIEWED	APPROVED	FILE NAME			
DRAWING NO.							REV.	



Option 1-4

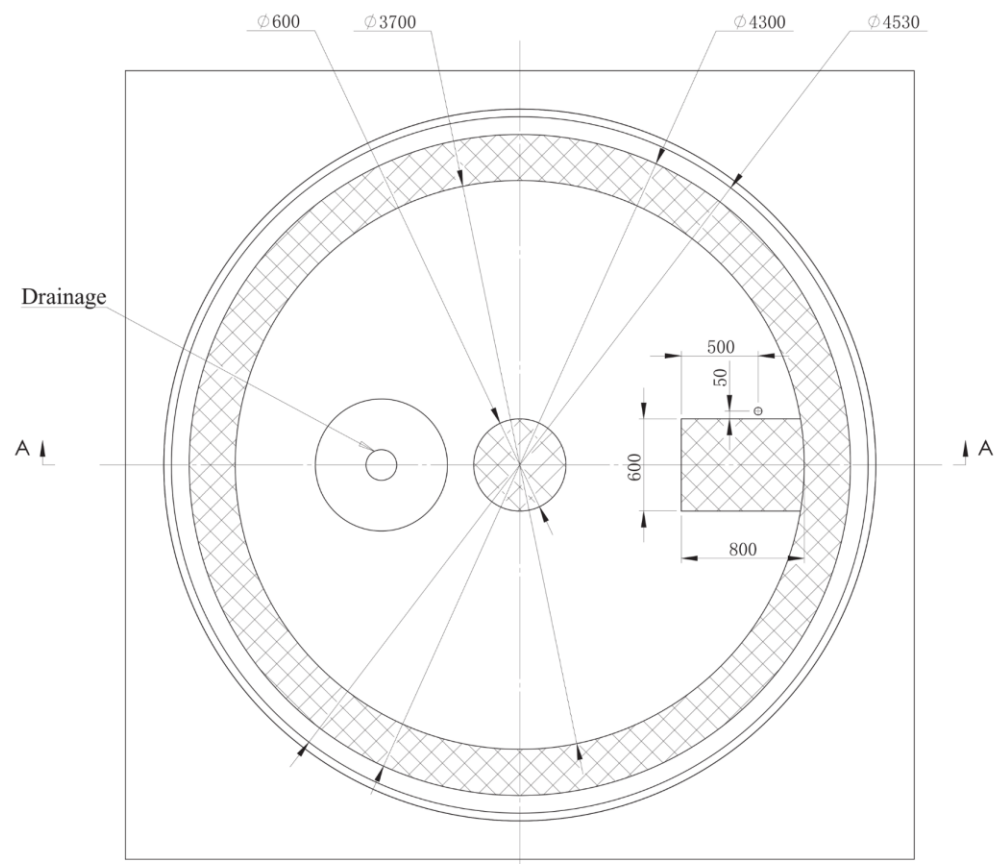
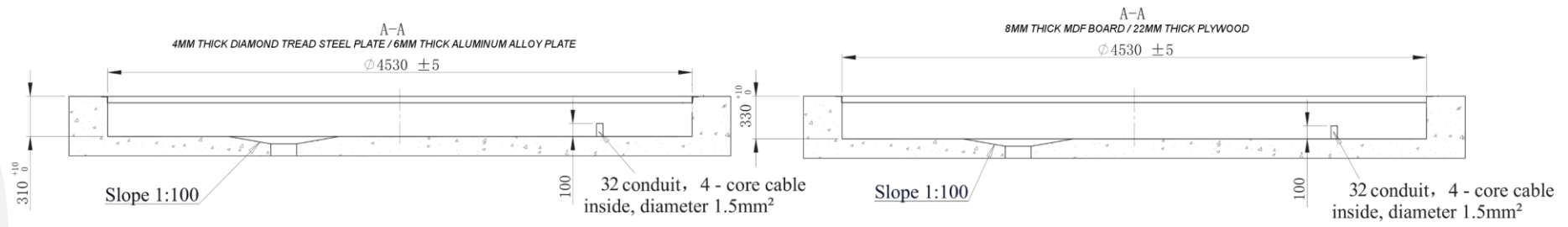
Motor underneath

<p>THIS DRAWING IS THE PROPERTY OF POWERUP ENGINEERING PTY. LTD. THE INFORMATION CONTAINED HEREON MAY NOT BE USED OR COPIED IN ANY MANNER WITHOUT THE WRITTEN PERMISSION OF THE OWNER.</p>		JOB POWERUP ENGINEERING STANDARD DRAWING					TITLE	
		DATE		SCALE	S/N	SUBJECT		
		DRAWN	DESIGNED	CHECKED	REVIEWED	APPROVED	FILE NAME	REV. <input type="checkbox"/>
		DRAWING NO.						



Option 1-4

Motor underneath



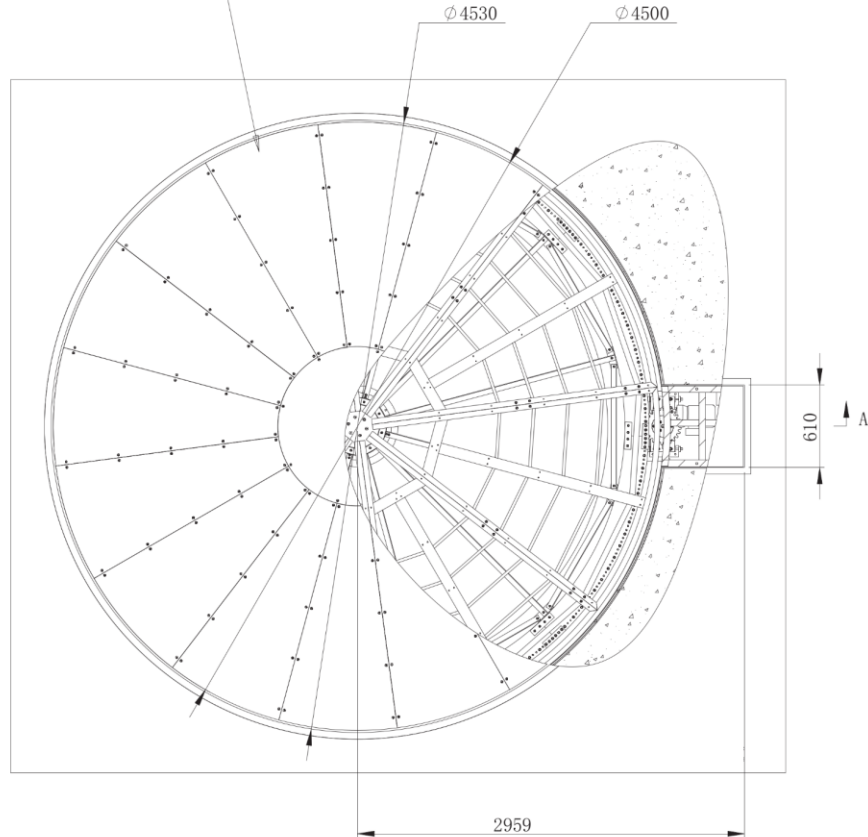
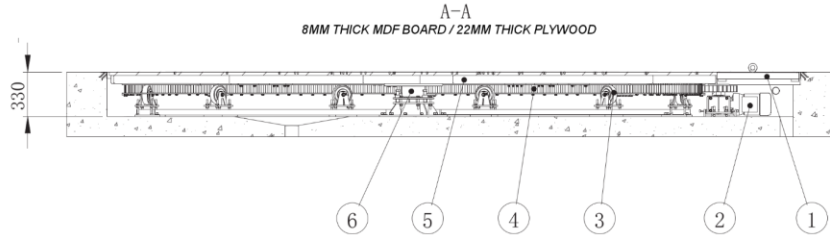
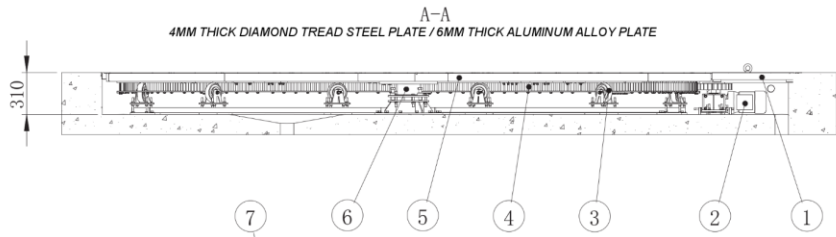
Specification

1. The pit is made by C25 or higher reinforced concrete;
2. The mesh region is the location of center bearing, motor drive and support wheel; Pressure is 0.35MPa. Shear force at motor drive location is 1200N;
3. Flatness of pit form to have error of less than 10mm, depth of the pit is no less than 310mm;
4. Circularity of pit diameter 4530mm to have error less than 10mm;
5. The center bearing, support wheel and motor drive are fixed on the ground by M8 X 80mm expansion bolts;
6. There is 4 core cable in the conduit (50mm PPR plastic pipe). Diameter is 1.5mm² ;
7. Input power to the control box is 220V~240V AC. Motor should have ground protection cable;
8. The dimension and quantity of the drainage is designed and made based on the actual displacement by buyer.

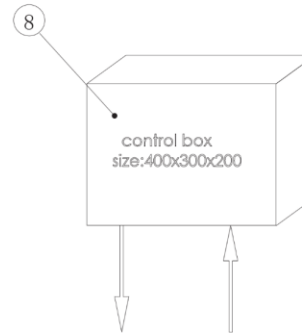
THIS DRAWING IS THE PROPERTY OF
POWERUP ENGINEERING PTY. LTD.
 THE INFORMATION CONTAINED
 HEREON MAY NOT BE USED OR
 COPIED IN ANY MANNER WITHOUT
 THE WRITTEN PERMISSION OF THE
 OWNER.



JOB	POWERUP ENGINEERING STANDARD DRAWING				TITLE	
DATE		SCALE	S/N	SUBJECT		
DRAWN	DESIGNED	CHECKED	REVIEWED	APPROVED	FILE NAME	
					DRAWING NO.	
						REV.



No.	Item Name	Quantity
1	Motor pit lid	1
2	Motor drive	1
3	Support wheel	12
4	Pin-gear device	8
5	Steelworks	8
6	Center bearing	1
7	Top surface	17
8	Control box	1



4 - core cable to motor
Power supply cable
specification: H05VV-F 4G1.5

Input power: 200~240V
Power supply cable
specification: H05VV-F 3G1.5



Option 1-4

Motor on the side

THIS DRAWING IS THE PROPERTY OF
POWERUP ENGINEERING PTY. LTD.
THE INFORMATION CONTAINED
HEREON MAY NOT BE USED OR
COPIED IN ANY MANNER WITHOUT
THE WRITTEN PERMISSION OF THE
OWNER.



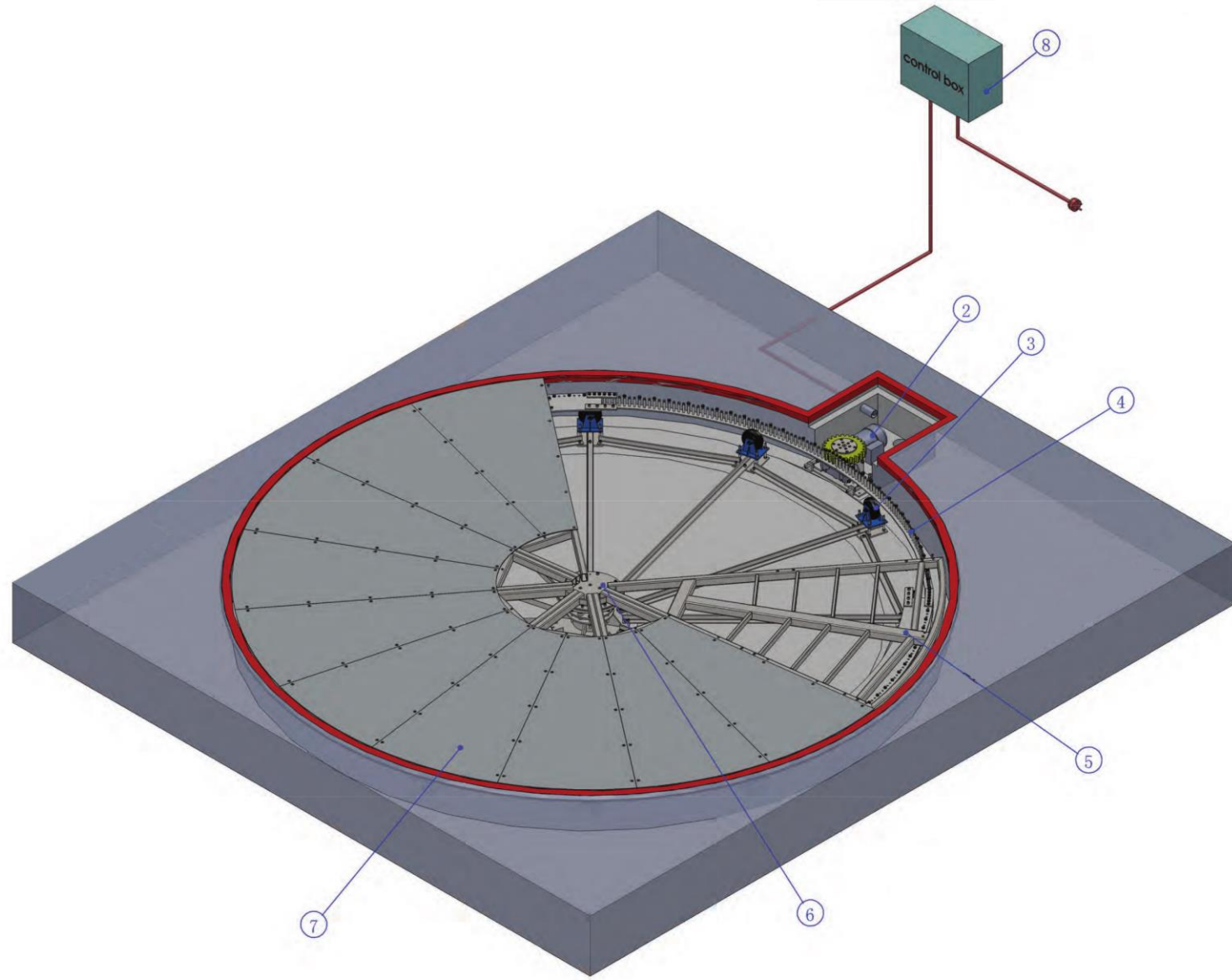
**powerup
engineering**

JOB		POWERUP ENGINEERING STANDARD DRAWING			TITLE		
DATE			SCALE	S/N	SUBJECT		
DRAWN	DESIGNED	CHECKED	REVIEWED	APPROVED	FILE NAME		
					DRAWING NO.		REV.



Option 1-4

Motor on the side

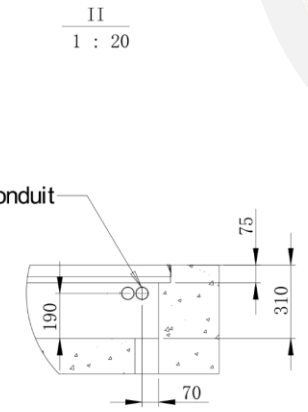
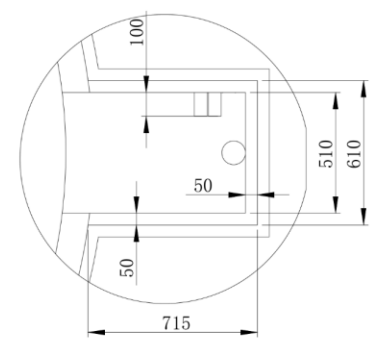
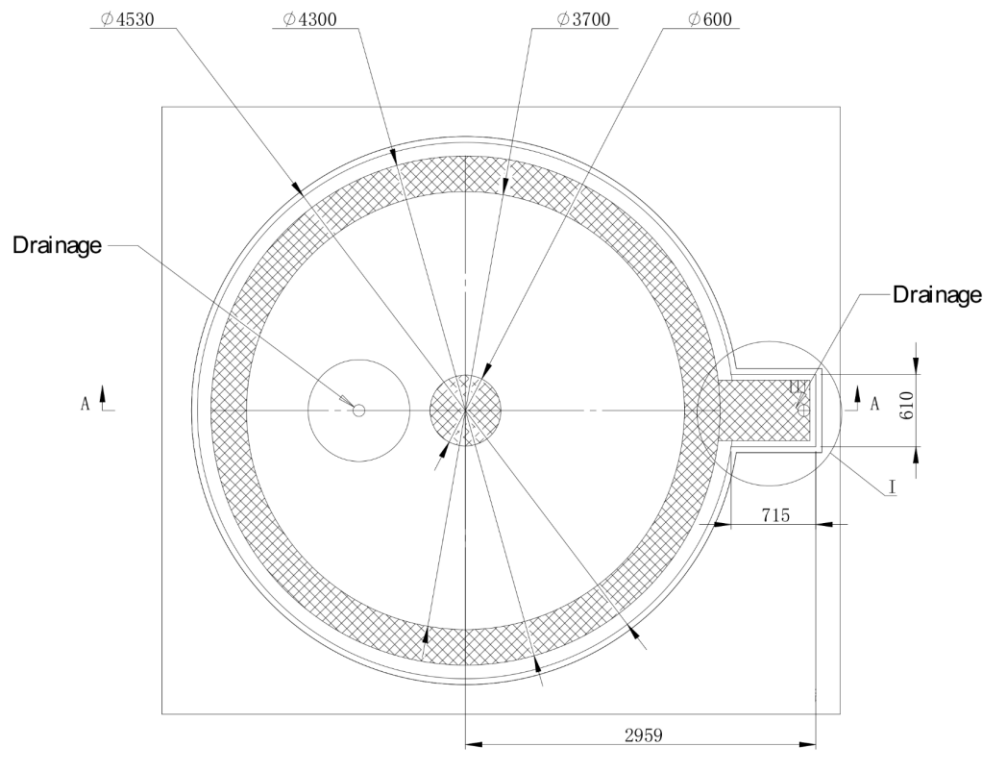
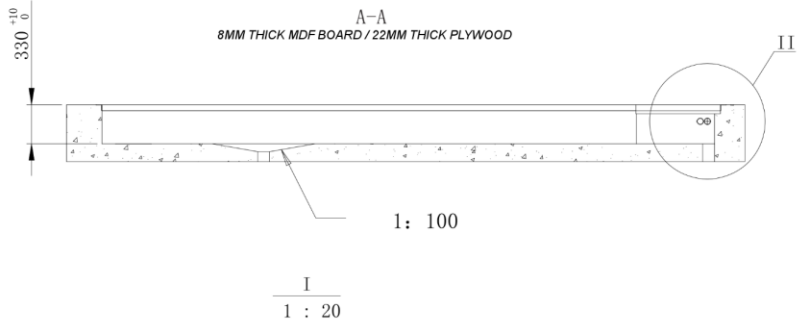
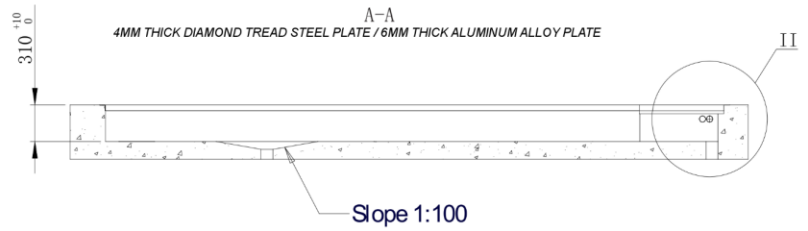


THIS DRAWING IS THE PROPERTY OF
POWERUP ENGINEERING PTY. LTD.
 THE INFORMATION CONTAINED
 HEREON MAY NOT BE USED OR
 COPIED IN ANY MANNER WITHOUT
 THE WRITTEN PERMISSION OF THE
 OWNER.



**powerup
 engineering**

JOB	POWERUP ENGINEERING STANDARD DRAWING				TITLE	
DATE			SCALE	S/N	SUBJECT	
DRAWN	DESIGNED	CHECKED	REVIEWED	APPROVED	FILE NAME	
					DRAWING NO.	REV.



Specification

1. The pit is made by C35 or higher reinforced concrete;
2. The mesh region is the location of center bearing, motor drive and support wheel; Pressure is 0.35MPa. Shear force at motor drive location is 1200N;
3. Flatness of pit form to have error of less than 10mm, depth of the pit is no less than 310mm;
4. Circularity of pit diameter 4530mm to have error less than 10mm;
5. The center bearing, support wheel and motor drive are fixed on the ground by M8 X 80mm expansion bolts;
6. There are 2 pcs of 32mm conduit. Please contact us and determine the quantity according to the function of the turntable;
7. Input power to the control box is 220V~240V AC. Motor should have ground protection cable;
8. The dimension and quantity of the drainage is designed and made based on the actual displacement by buyer.



Motor on the side
Option 1-4

THIS DRAWING IS THE PROPERTY OF
POWERUP ENGINEERING PTY. LTD.
THE INFORMATION CONTAINED
HEREON MAY NOT BE USED OR
COPIED IN ANY MANNER WITHOUT
THE WRITTEN PERMISSION OF THE
OWNER.

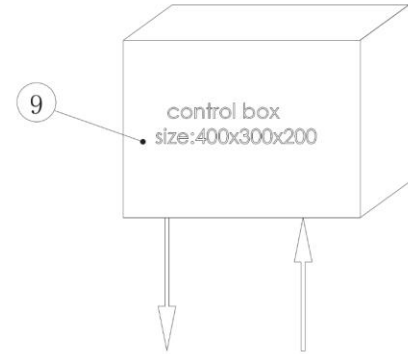
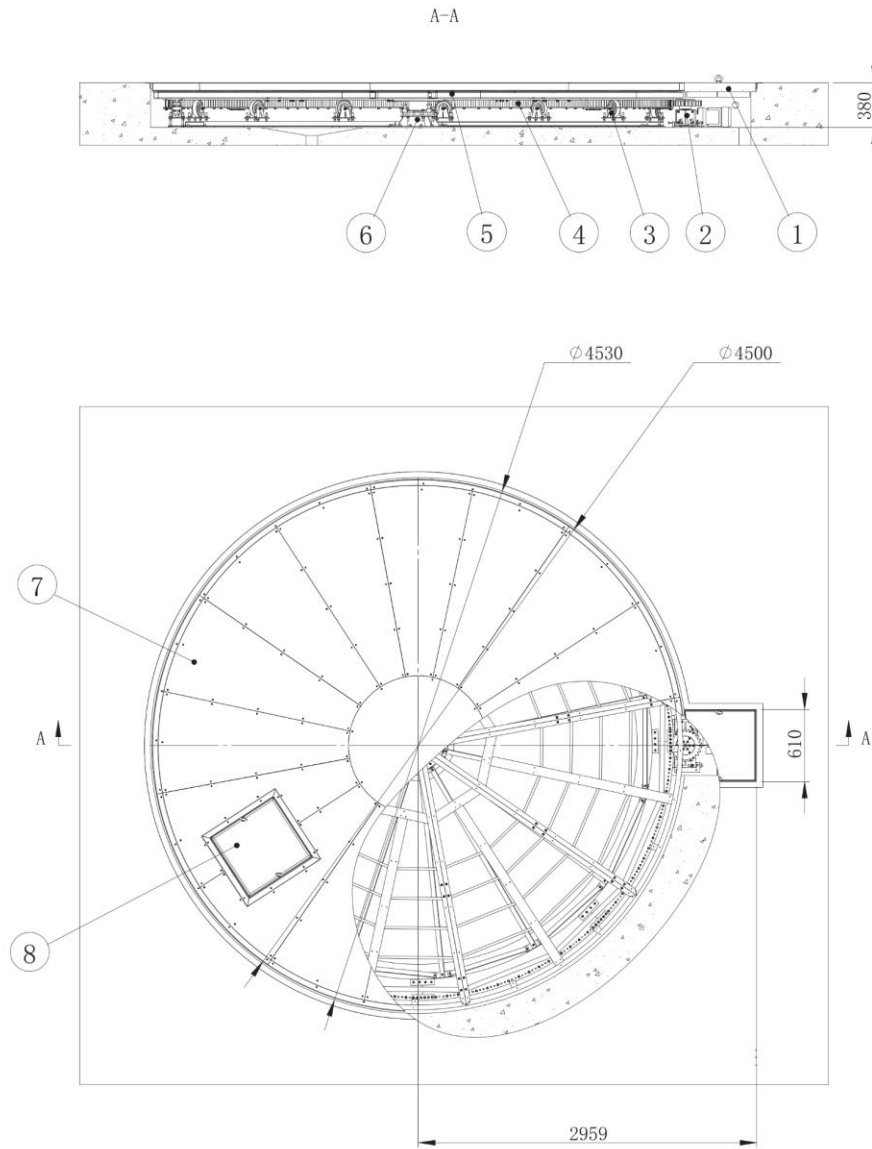


JOB	POWERUP ENGINEERING STANDARD DRAWING				TITLE	
DATE		SCALE	S/N	SUBJECT		
DRAWN	DESIGNED	CHECKED	REVIEWED	APPROVED	FILE NAME	
					DRAWING NO.	REV. \triangle



Option 5

Motor on the side



4 - core cable to motor
Power supply cable
Specification: H05VV-F 4G1.5

Input power: 200~240V
Power supply cable
Specification: H05VV-F 3G1.5

No.	Item Name	Quantity
1	Motor pit lid	1
2	Motor drive	1
3	Support wheel	15
4	Pin-gear device	8
5	Steelworks	8
6	Center bearing	1
7	Top surface	17
8	Access door	1
9	Control box	1

THIS DRAWING IS THE PROPERTY OF
POWERUP ENGINEERING PTY. LTD.
THE INFORMATION CONTAINED
HEREON MAY NOT BE USED OR
COPIED IN ANY MANNER WITHOUT
THE WRITTEN PERMISSION OF THE
OWNER.



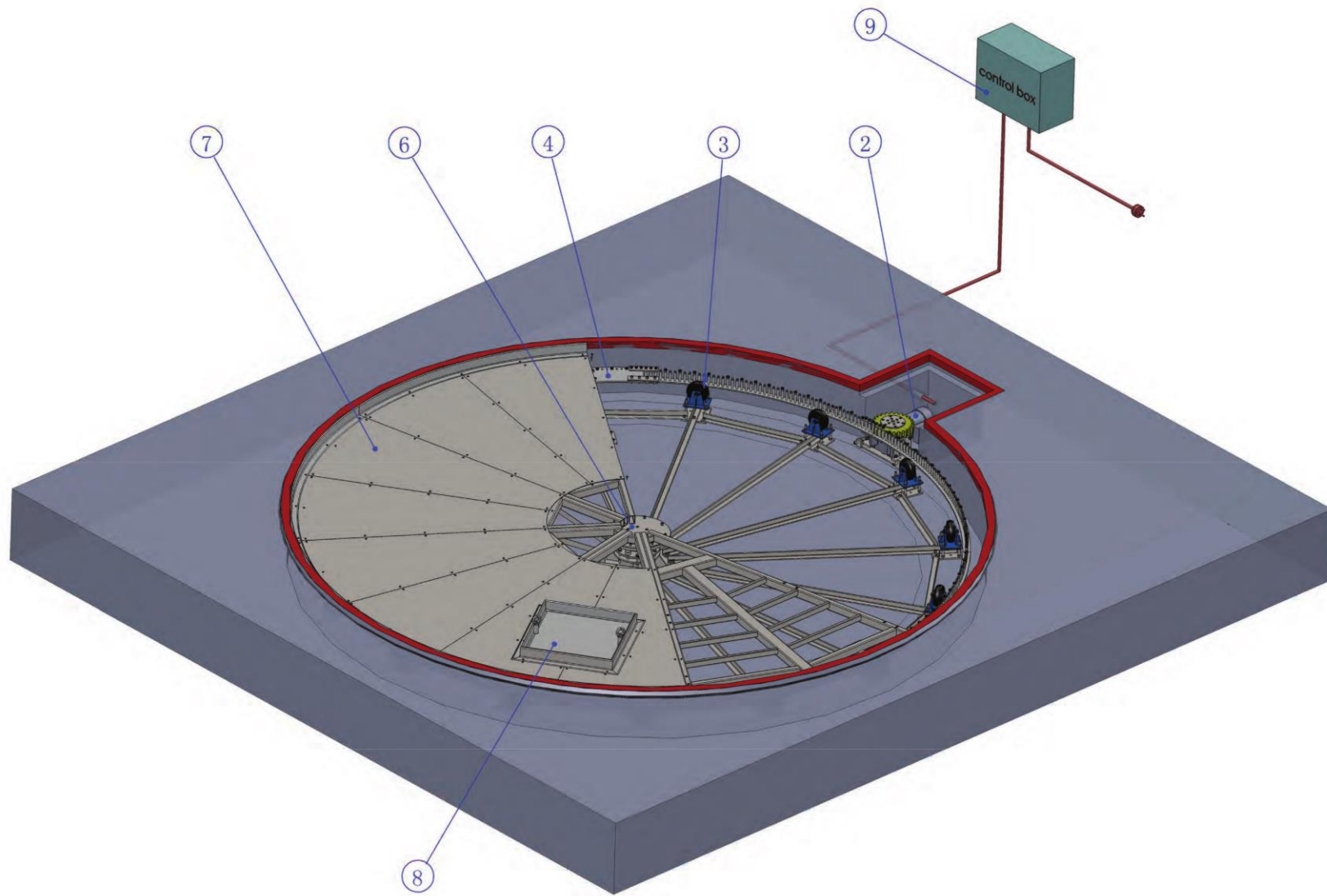
**powerup
engineering**

JOB	POWERUP ENGINEERING STANDARD DRAWING				TITLE
DATE			SCALE	S/N	SUBJECT
DRAWN	DESIGNED	CHECKED	REVIEWED	APPROVED	FILE NAME
					DRAWING NO.
					REV.



Option 5

Motor on the side



THIS DRAWING IS THE PROPERTY OF
POWERUP ENGINEERING PTY. LTD.
 THE INFORMATION CONTAINED
 HEREON MAY NOT BE USED OR
 COPIED IN ANY MANNER WITHOUT
 THE WRITTEN PERMISSION OF THE
 OWNER.

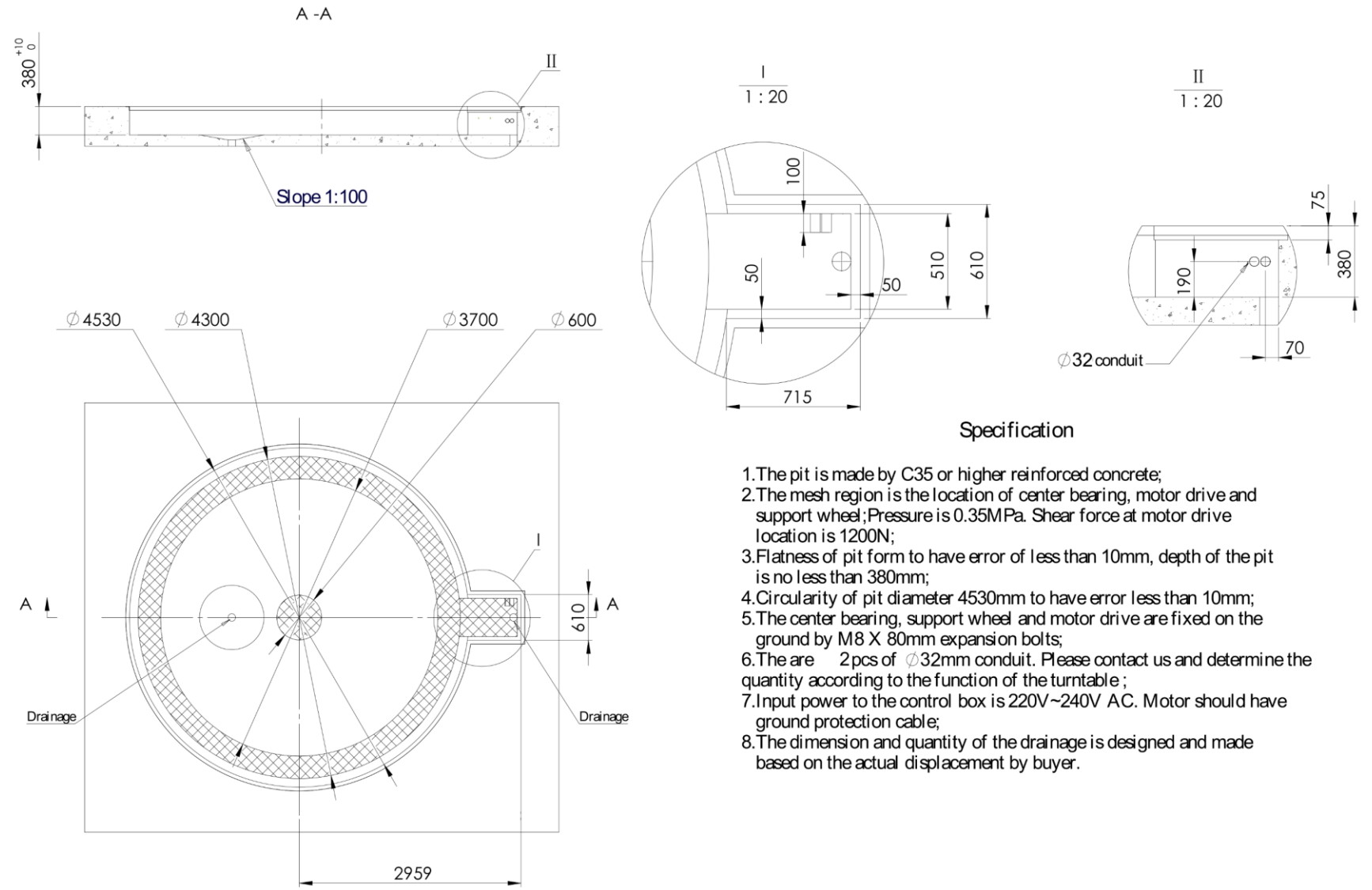


JOB	POWERUP ENGINEERING STANDARD DRAWING				TITLE	
DATE		SCALE	S/N		SUBJECT	
DRAWN	DESIGNED	CHECKED	REVIEWED	APPROVED	FILE NAME	REV.
					DRAWING NO.	



Option 5

Motor on the side



Specification

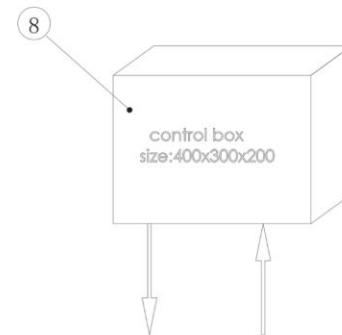
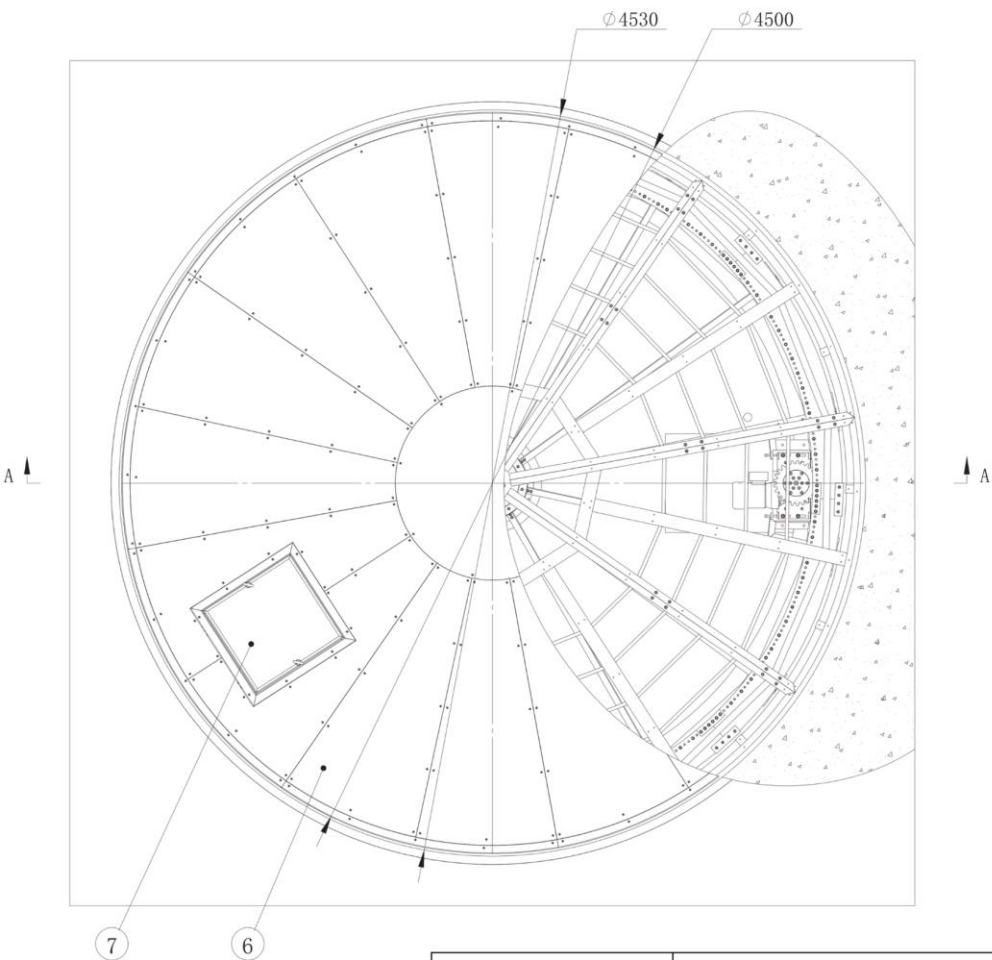
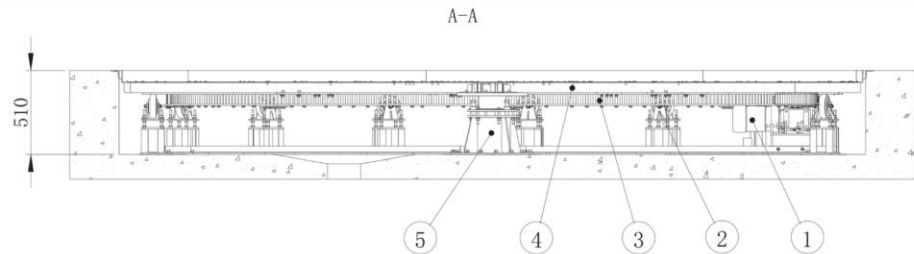
1. The pit is made by C35 or higher reinforced concrete;
2. The mesh region is the location of center bearing, motor drive and support wheel; Pressure is 0.35MPa. Shear force at motor drive location is 1200N;
3. Flatness of pit form to have error of less than 10mm, depth of the pit is no less than 380mm;
4. Circularity of pit diameter 4530mm to have error less than 10mm;
5. The center bearing, support wheel and motor drive are fixed on the ground by M8 X 80mm expansion bolts;
6. There are 2 pcs of $\phi 32$ mm conduit. Please contact us and determine the quantity according to the function of the turntable;
7. Input power to the control box is 220V~240V AC. Motor should have ground protection cable;
8. The dimension and quantity of the drainage is designed and made based on the actual displacement by buyer.

THIS DRAWING IS THE PROPERTY OF
POWERUP ENGINEERING PTY. LTD.
 THE INFORMATION CONTAINED
 HEREON MAY NOT BE USED OR
 COPIED IN ANY MANNER WITHOUT
 THE WRITTEN PERMISSION OF THE
 OWNER.



**powerup
 engineering**

JOB	POWERUP ENGINEERING STANDARD DRAWING				TITLE	
DATE		SCALE	S/N	SUBJECT		
DRAWN	DESIGNED	CHECKED	REVIEWED	APPROVED	FILE NAME	
					DRAWING NO.	REV. \triangle



4 - core cable to motor
Power supply cable
specification: H05VV-F 4G1.5

Input power: 200~240V
Power supply cable
specification: H05VV-F 3G1.5

No.	Item Name	Quantity
1	Motor drive	1
2	Support wheel	15
3	Pin-gear device	8
4	Steelworks	8
5	Center bearing	1
6	Top surface	17
7	Access door	1
8	Control box	1



Option 5

Motor underneath

THIS DRAWING IS THE PROPERTY OF
POWERUP ENGINEERING PTY. LTD.
THE INFORMATION CONTAINED
HEREON MAY NOT BE USED OR
COPIED IN ANY MANNER WITHOUT
THE WRITTEN PERMISSION OF THE
OWNER.



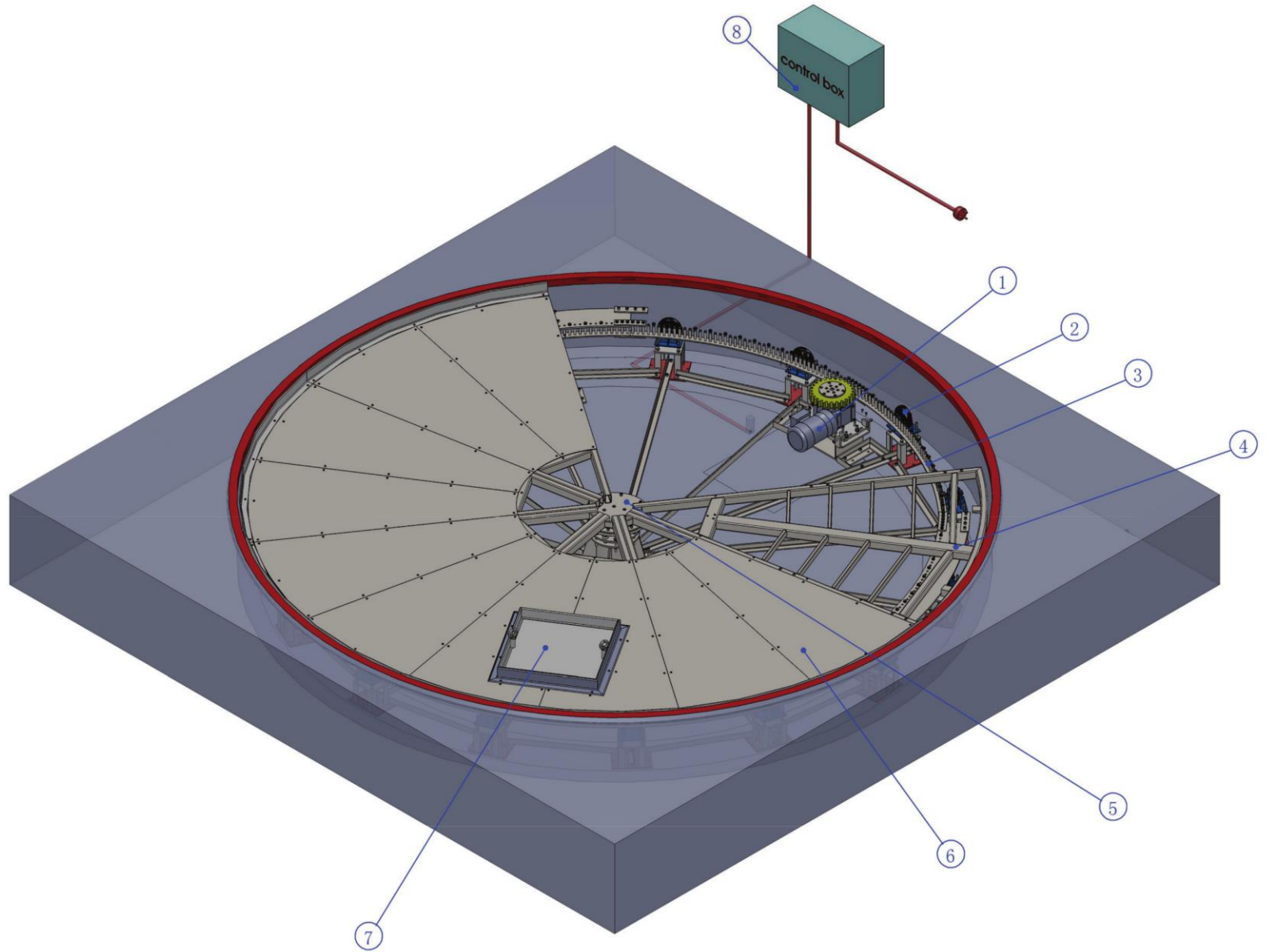
**powerup
engineering**

JOB					POWERUP ENGINEERING STANDARD DRAWING		TITLE	
DATE					SCALE	S/N	SUBJECT	
DRAWN	DESIGNED	CHECKED	REVIEWED	APPROVED	FILE NAME		REV.	
					DRAWING NO.			



Option 5

Motor underneath

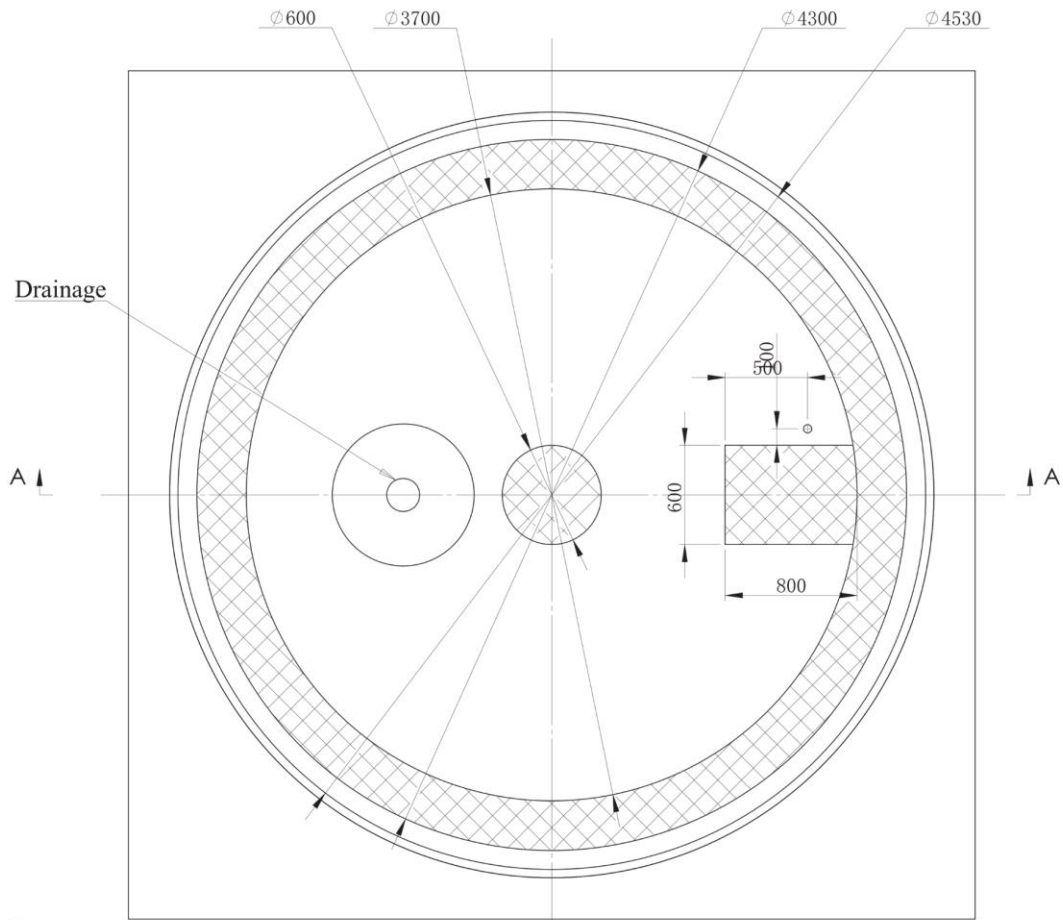
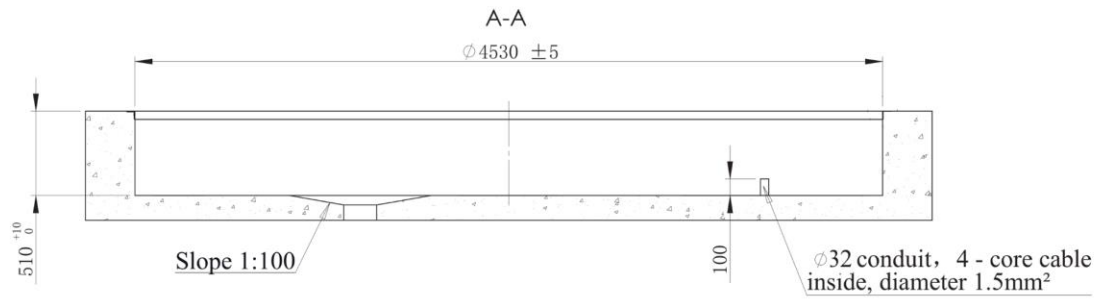


THIS DRAWING IS THE PROPERTY OF POWERUP ENGINEERING PTY. LTD. THE INFORMATION CONTAINED HEREON MAY NOT BE USED OR COPIED IN ANY MANNER WITHOUT THE WRITTEN PERMISSION OF THE OWNER.



**powerup
engineering**

JOB	POWERUP ENGINEERING STANDARD DRAWING				TITLE	
DATE			SCALE	S/N	SUBJECT	
DRAWN	DESIGNED	CHECKED	REVIEWED	APPROVED	FILE NAME	
					DRAWING NO.	
						REV.



Specification

1. The pit is made by C25 or higher reinforced concrete;
2. The mesh region is the location of center bearing, motor drive and support wheel; Pressure is 0.35MPa. Shear force at motor drive location is 1200N;
3. Flatness of pit form to have error of less than 10mm, depth of the pit is no less than 510mm;
4. Circularity of pit diameter 4530mm to have error less than 10mm;
5. The center bearing, support wheel and motor drive are fixed on the ground by M8 X 80mm expansion bolts;
6. There is 4 core cable in the conduit (50mm PPR plastic pipe). Diameter is 1.5mm^2 ;
7. Input power to the control box is 220V~240V AC. Motor should have ground protection cable;
8. The dimension and quantity of the drainage is designed and made based on the actual displacement by buyer.



Motor underneath
Option 5

THIS DRAWING IS THE PROPERTY OF
POWERUP ENGINEERING PTY. LTD.
THE INFORMATION CONTAINED
HEREON MAY NOT BE USED OR
COPIED IN ANY MANNER WITHOUT
THE WRITTEN PERMISSION OF THE
OWNER.



**powerup
engineering**

JOB	POWERUP ENGINEERING STANDARD DRAWING				TITLE	
DATE		SCALE	S/N	SUBJECT		
DRAWN	DESIGNED	CHECKED	REVIEWED	APPROVED	FILE NAME	REV. \triangle
					DRAWING NO.	